

# Gas engines

**Challenge:** **Gas engine reliability.** Operators of gas engines used for power generation or natural gas compression need a crankcase oil that offers the lowest cost of operation – reducing wear and deposits while significantly extending service intervals and maximizing fuel efficiency.

**Solution:** **Protect your gas-engine investment and reduce total operating costs with Mobil SHC™ synthetic lubricants** designed to reduce wear, deposits, oil consumption and frictional losses.

Compared to conventional lubricants, Mobil SHC lubricants provide:



### Safety

- Reduced maintenance personnel exposure



### Environmental Care

- Reduced used oil generation and disposal
- Potential reduction of CO<sub>2</sub> emissions with improved fuel economy



### Productivity

- Fewer breakdowns, repairs and in-frame overhauls
- Substantially longer ODI and reduced maintenance costs
- Reduced fuel costs
- Reduced wear and longer asset life

### Industries

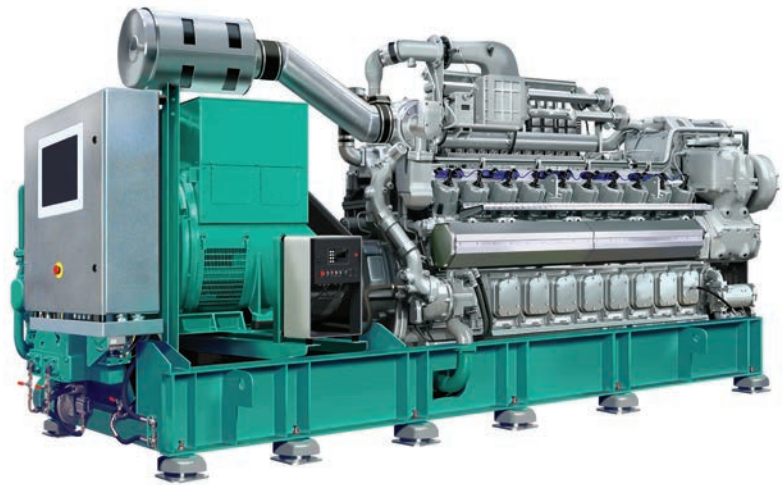
- Natural gas transmission and processing plants
- Offshore and onshore drilling rigs and producing platforms
- Petrochemical and chemical plants
- Power generating stations

### Key applications

- Crankcase engine oil

### Products

- **Mobil SHC Pegasus™ – SAE 30 and 40**  
– Our latest synthetic gas engine oils
- **Mobil Pegasus™ 1 – SAE 15W-40**  
– Gas engine oil



\*Visit [mobil.com/shc](http://mobil.com/shc) to learn how certain Mobil-branded lubricants may provide benefits to help minimize environmental impact. Actual benefits will depend upon product selected, operating conditions and applications.

Industrial  
Lubricants



Advancing  
Productivity™

# Gas engines

## Key equipment builder approvals

Mobil SHC™ lubricants are endorsed by leading gas engine builders, including:

- **GE Waukesha APG engines** — Mobil SHC Pegasus™ 30, Mobil Pegasus™ 1
- **GE Jenbacher AG** — Mobil Pegasus 1
- **Kawasaki Heavy Industries (KG/KG-V engines)** — Mobil SHC Pegasus 30
- **MAN Nutzfahrzeuge AG** — Mobil Pegasus 1
- **Marathon Engine Systems** — Mobil SHC Pegasus 30
- **Mitsubishi Heavy Industries** — Mobil SHC Pegasus 30
- **MTU Onsite Energy** — Mobil SHC Pegasus™ 40
- **MWM GmbH (CAT Energy Solutions)**
- **Wärtsilä** — Mobil Pegasus 1



Visit [mobil.com/industrial](http://mobil.com/industrial) to search by equipment builder name for the latest specific recommendations.

## Proof of Performance

[Mobil SHC Pegasus™ 30 synthetic natural gas engine oil helps pipeline service provider reduce in-frame overhauls](#)

[Mobil SHC Pegasus™ 30 synthetic gas engine oil helps reduce fuel consumption and extend ODI](#)

[Mobil SHC Pegasus™ 40 synthetic oil helps clean engine and extend gas engine oil life from 3,000 to 16,000 hours](#)

[Mobil Pegasus™ 1 helps oil and gas producer extend oil drain intervals and reduce downtime](#)

[Mobil Pegasus™ 1 synthetic gas engine oil helps O&G producer improve reliability, reduce make-up oil while tripling ODI](#)

Read the complete stories at [mobil.com/shc](http://mobil.com/shc), where you can explore other success stories and find out how Mobil SHC synthetic lubricants can energize your business.



The energy efficiency design is a trademark of Exxon Mobil Corporation. The energy efficiency of Mobil SHC Pegasus relates solely to the fluid performance when compared to ExxonMobil's standard SAE 40 natural gas engine oils. The technology used in Mobil SHC Pegasus demonstrated up to a 1.5 percent increase in fuel efficiency, as measured by fuel consumed in operation, compared to Mobil Pegasus 1005 and 805 series when tested in standard natural gas engine applications under controlled conditions. The energy efficiency claim for this product is based on test results on the use of the fluid conducted in accordance with applicable industry standards and protocols.

Note: Productivity Pointers are provided for the use of ExxonMobil and our authorized distributors. Schematics and product series recommendations are intended as a general guide. Please visit [mobil.com/industrial](http://mobil.com/industrial) for specific builder recommendations.

© 2017 ExxonMobil. All trademarks used herein are trademarks or registered trademarks of Exxon Mobil Corporation or one of its subsidiaries.

[mobil.com/shc](http://mobil.com/shc)