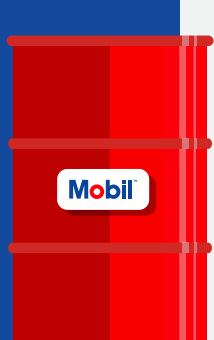


Is Your Manufacturing Operation Primed For An Effective Restart?

Unlock enhanced performance in your machine shop and assembly with Mobil™ lubrication solutions

Preparing to restart?

Now could be the ideal time to unlock new potential in your plant. That's where the team from Mobil™ come in.



- Optimum lubrication in a wide range of applications
- Extended equipment life and reduced maintenance costs
- Precision component machining
- The Mobil™ 'Magnificent 7' lubrication offer

Mobil DTE™ 20 Ultra

Premium quality, anti-wear hydraulic oils

2x oil lifeⁱⁱ



Mobil DTE 10 Excel™

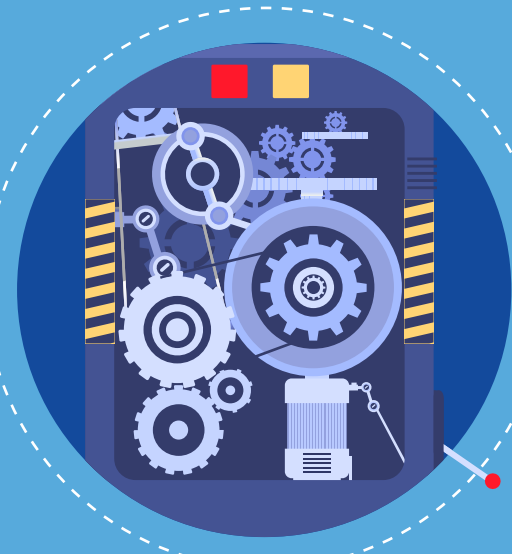
Zinc-free, long-life hydraulic oils

6% efficiency gainⁱ

Mobil SHC™ 600

Extended oil drain, synthetic gear oils

3.6% efficiency gainⁱⁱⁱ



Mobil Vactra™ Oil

Globally renowned slideway lubricants with 140+ builder approvals

Precision machining



Mobil SHC™ Rarus

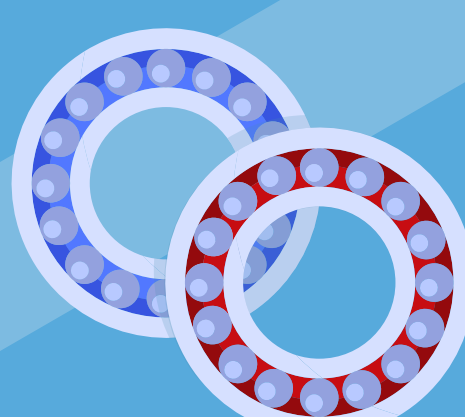
Supreme performance air compressor oils

Up to 24,000 hours' lubricant life^{iv}

Mobilgrease XHP™ 222

Extended service life grease

Blue and sticky



Mobilith SHC™ 220

High temperature, multipurpose synthetic grease

Red and resilient

Enhance your competitive edge with Mobil™



100+ years of lubrication experience

1,000+ collaborations with global equipment builders

Skilled engineers providing **bespoke solutions** for your plant

1 million+ Mobil ServSM oil samples

Contact Mobil™ to find out if your operation is primed for an effective restart: www.global.mobil.com



ⁱCompared to Mobil DTE 20 when operating in standard hydraulic applications under controlled conditions.
ⁱⁱCompared to Nuto H, a conventional mineral oil with a viscosity index around 100 and a zinc-based anti-wear system - meeting at least ISO 11158 (L-HM) and/or DIN 51524-2 (HLP type) requirements.
ⁱⁱⁱWhen compared to Mobilgear 600 XP 460, a conventional mineral oil of the same viscosity grade, in gear applications.
^{iv}Result relates solely to fluid performance in one rotary screw compressor.
 Extended life and energy efficiency claims are based on the normal use of the products in their respective applications and may not be achieved under other circumstances.
 Results may vary based on operating conditions and equipment. Always refer to the machine manual before final lubricant choice.
 ©2020 Exxon Mobil Corporation. The terms ExxonMobil and Mobil are used for convenience only and may refer to Exxon Mobil Corporation or one of its affiliates.